



Gloria with a Scarf
oil on linen, 16 x 12"



Gary Godbee

I always hope that my paintings are able to resonate with the people who see them, as an emotional connection to a work of art is one of the most important aspects of the viewing experience. Of course, I have a deep emotional connection to the works I paint, which should be said, as I often spend months at a time working on any given painting. As I often tell my painting students, the goal is not simply to create a work that is believable but to create something engaging that communicates something to someone else.

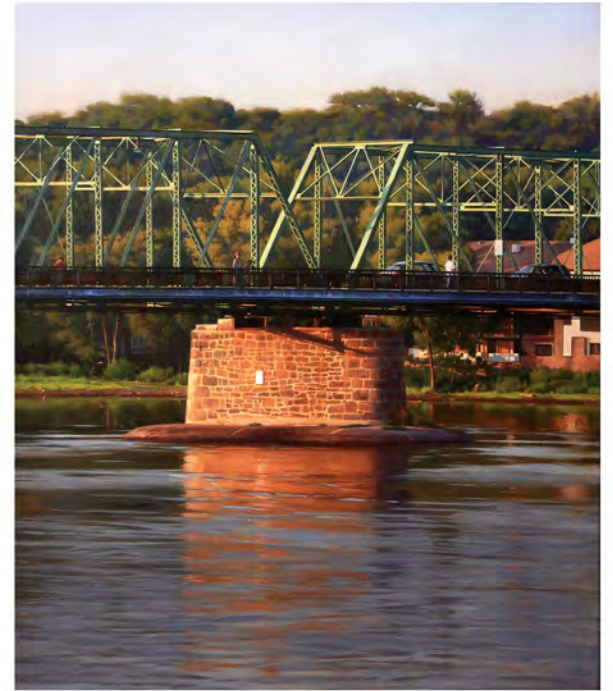
My painting is always evolving and I honestly continue to learn about my craft every day. Drawing, which is the backbone of realist painting, is something that I never neglect and is a constant and effective tool to make sense of the forms of nature- for myself as well as for my students.

The most recent landscape paintings I've completed continue to follow in my endeavor to find beauty in often surprising places. Dusk on a lonely stretch of salt marshes, late afternoon sunlight reflecting off an overpass and roadway signs on a NJ highway or a single bright ditch along the barren stretch of landscape on the northern shores of Canada's Gaspé Peninsula have all caught my eye.

My work can be seen currently at Gallery Henoeh in NYC, NY (galleryhenoch.com) and Studio 7 Art Gallery, Bernardsville, NJ (studio7artgallery.com).

www.garygodbee.com
godbeeartwork@verizon.net

GARY GODBEE NEW PAINTINGS



New Hope Bridge - oil on linen, 24 x 18"



View of St. Lawrence River
oil on linen, 36 x 36"



Route #24 Overpass - oil on linen, 40 x 40"



Jersey City from Ellis Island, oil on linen, 24x60"

Gary Godbee received a B.F.A. degree in painting from Boston University in 1974 and has studied graduate painting at Brooklyn College and Montclair State University. He has taught drawing at the Art Students League, landscape and portrait painting workshops in Sante Fe for the Academy of Realist Art, and currently teaches painting courses at the Montclair Art Museum School/ Yard School of Art (since 1993) and the Center for Contemporary Art (formerly the Somerset Art Association) in Bedminster, NJ (since 2001).

Gary is best known for his realist landscape paintings, which often include panoramic views of northern New Jersey. His work has been shown in New York, New Jersey, Connecticut, Virginia and California, and can be found in collections in the U.S., Europe and Japan.



Cape May Marshes at Sunset, oil on linen, 36 x 60"



Winter View of the Delaware River, oil on canvas, 36 x 48"



Top to bottom (Flemish Stripes, oil on canvas, 40 x 30"; Southampton Salt Marsh, oil on linen, 18 x 24")

Gary Godbee has received Fellowships in 2004 and 1994 from the New Jersey State Council on the Arts, exceptional merit awards from the City Without Walls Gallery in Newark in 2002 and 1995, and an Award of Merit from the Portrait Institute in New York in 1996. He was included in the 1998 Society of Illustrators Annual Exhibition and is listed in Who's Who in American Art (since 2007) and Who's Who in America (since 2000). In 2000, he completed two twenty-foot wide murals commissioned through the NJ State Council on the Arts that are now permanently installed in the Department of Labor Building in Trenton. Gary is also a Lifetime Honorary Member of ACOPAL, the America China Oil Painting Artists League, founded early in 2010. ACOPAL's "Contemporary American Realism" exhibition featured three of Gary's paintings in shows at the National Arts Club, NYC in 2011, the Butler Institute, Illinois and the Beijing World Art Museum in 2012, with an extensive tour of China through 2013.